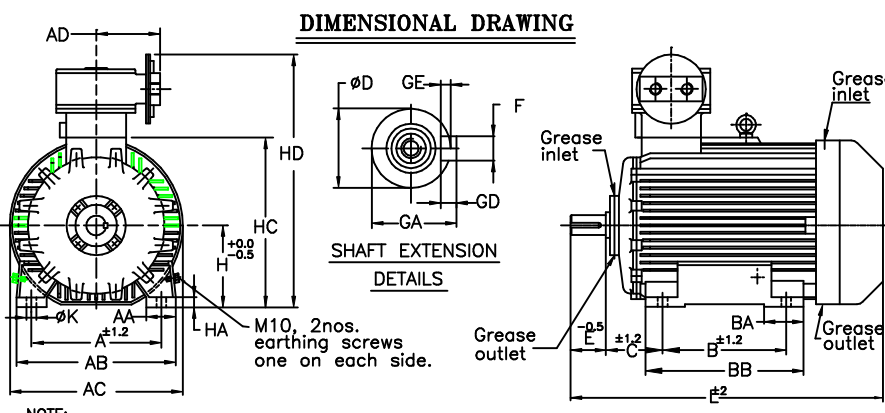


UNMENTIONED TOLERANCES  
 LINEAR ABOVE 0 6 315 1000  
 DIMENSIONS (SUPTO 6 315 1000 2000  
 (MACHINED) TOL. ±0.2 ±0.5 ±0.8 ±1.2  
 ANGLES ± 1/2°

ALL INFORMATION CONTAINED IN THIS DOCUMENT IS CONFIDENTIAL AND THE PROPERTY OF KIRLOSKAR ELECTRIC CO.LTD. REPRODUCING OF THESE IN ANY FORM IS TO BE DONE WITH THE SPECIFIC PERMISSION OF THE COMPANY.

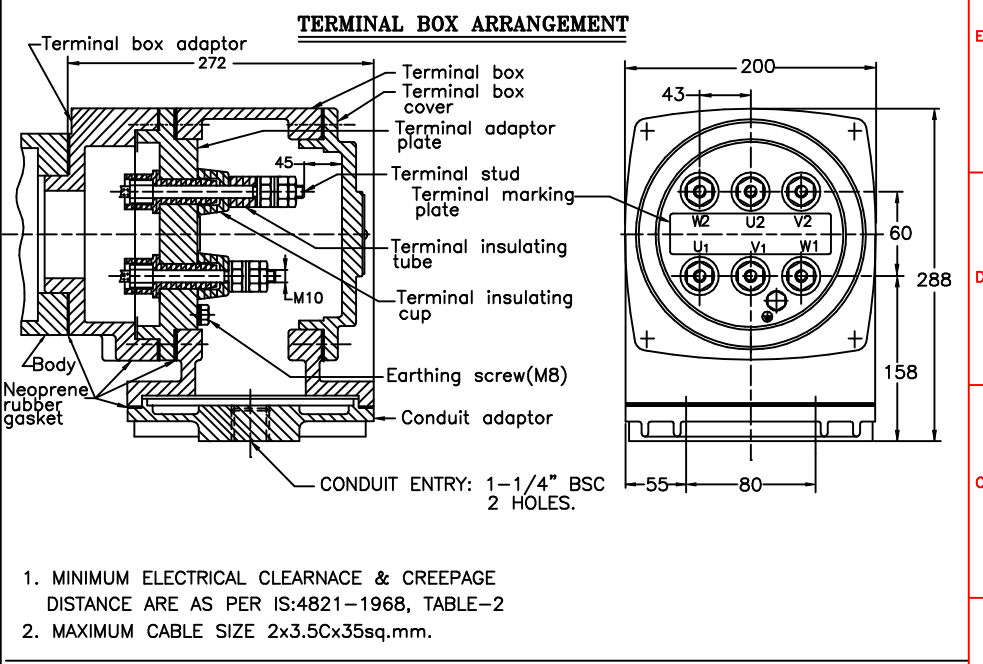
SURFACE ROUGHNESS (MAX) AS PER KSD-02-027  
 Ra μm 50 12.5 25 1.6 3.2 6.3 0.2 0.4 0.8 0.025 0.05 0.1  
 OLD NEW  
 UNMENTIONED  
 CHAM:  
 UC:



NOTE:-  
 1. DIMENSIONS ARE AS PER IS:1231.  
 2. DEGREE OF PROTECTION: IP55.  
 3. PROTECTED CENTRE HOLE "M20 X 40" DEEP FOR LE200 & "M16 X 32" DEEP FOR LE180 AS PER IS:2540  
 4. KEY & KEYWAY DIMENSIONS ARE AS PER IS:2048.  
 5. TOLERANCE ON KEYWAY IS P9.

ITEM/TAG No.				
RATING				
CABLE SIZE				
O/A NO.:	CUSTOMER :			
PROJECT :	CONSULTANT :	JOB No. :		

LE200L	318	76	395	415	188	305	76	381	133	55m6	110	16	59	10	6	200	25	420	692	19	785	
LE180L						279		343														725
LE180M	279	64	343	365	188	241	64	305	121	48k6	110	14	51.5	9	5.5	180	25	375	647	15		687
FRAME	A	AA	AB	AC	AD	B	BA	BB	C	∅D	E	F	GA	GD	GE	H	HA	HC	HD	K	L	



1. MINIMUM ELECTRICAL CLEARANCE & CREEPAGE DISTANCE ARE AS PER IS:4821-1968, TABLE-2  
 2. MAXIMUM CABLE SIZE 2x3.5Cx35sq.mm.

**Z122631100JR**

THIS SUPERSEDES ..... FROM dt ..... AS PER DCN No. ....  
 THIS SUPERSEDED BY ..... FROM dt ..... AS PER DCN No. ....

MATERIAL SPECIFICATION	RAW MATERIAL SIZE	WEIGHT kg	SCALE	NTS
		RM FIN.		

CASTING/FAB REF. \_\_\_\_\_ No.P.S.-  
 USED ON \_\_\_\_\_ REDRAWN CHECKED STANDARD APPROVED

**LE180 & 200**

Sd/- Sd/- Sd/- Sd/-  
 dt 22/01/2009 dt 22/01/2009 dt 22/01/2009 dt 22/01/2009

TITLE: **DIMENSION SHEET** **32263198R1**

SHEET ONE OF ONE

**KIRLOSKAR ELECTRIC COMPANY LTD. HUBLI-580030 (INDIA)**

1	--	0122209	REDRAWN IN A NEW FORMAT.	sd/-	22.01.09	QA PRODUCTION MMD
REV.	ZONE	DCN.No.	BRIEF RECORD	SIGNATURE	DATE	PRINTS ISSUED TO
8	7	6	5			