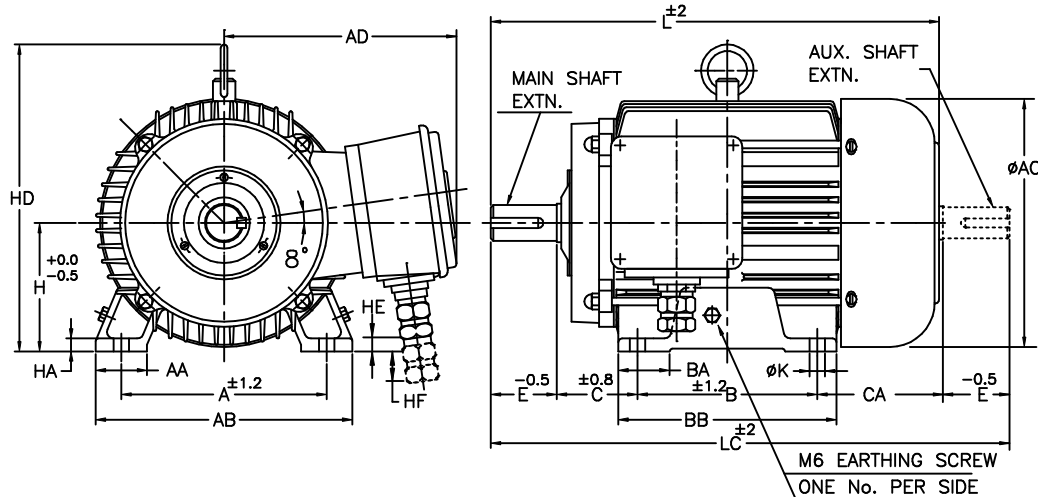


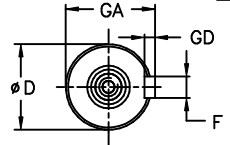
UNMENTIONED TOLERANCES
 LINEAR ABOVE 0 6 315 1000
 DIMENSIONS (UPTO) 6 315 1000 2000
 (MACHINED) TOL. ±0.2 ±0.5 ±0.8 ±1.2
 ANGLES ± 1/2°

ALL INFORMATION CONTAINED IN THIS DOCUMENT IS CONFIDENTIAL AND THE PROPERTY OF KIRLOSKAR ELECTRIC CO.LTD. REPRODUCING OF THESE IN ANY FORM IS TO BE DONE WITH THE SPECIFIC PERMISSION OF THE COMPANY.

DIMENSIONAL DRAWING

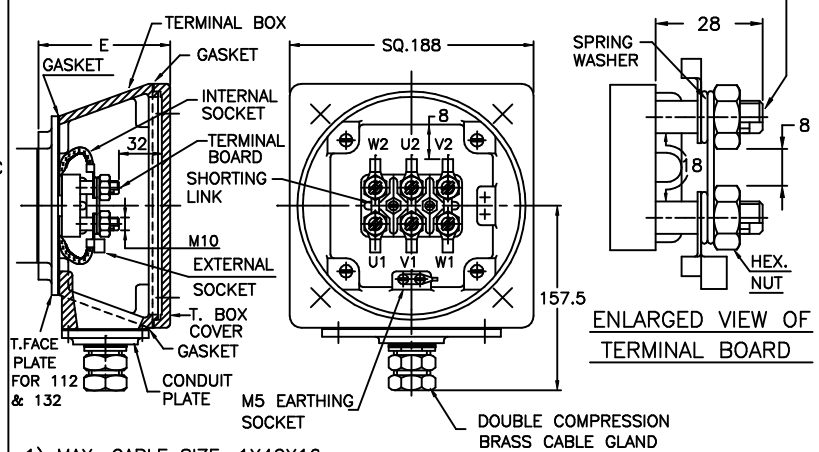


- NOTE :**
1. DIMENSIONS ARE AS PER IS:1231
 2. DEGREE OF PROTECTION: IP:55.
 3. TOLERANCE ON 'D' : j6 FOR $\phi 28$ & k6 FOR $\phi 38$ TO 42.
 4. PROTECTED CENTRE HOLE AT SHAFT EXTENSION AS PER IS:2540.
 "M10 X 24" FOR 'D'- $\phi 28$
 "M12 X 28" FOR 'D'- $\phi 38$
 "M16 X 32" FOR 'D'- $\phi 42$
 5. TERMINAL BOX CAN BE ROTATABLE THROUGH 360° IN STEPS OF 90°.
 6. BELOW MENTIONED 'HA' DIMENSIONS ARE MINIMUM.
 7. KEY & KEYWAY ARE AS PER IS:2048 & TOLERANCE ON KEYWAY IS P9.



DETAILS OF MAIN & AUXILIARY SHAFT EXTENSION

TERMINAL BOX ARRANGEMENT



- 1) MAX. CABLE SIZE: 1X4CX16sq.mm
- 2) MINIMUM ELECTRICAL CLEARANCE & CREEPAGE DISTANCES ARE AS PER TABLE-1 OF IS:6381 FOR "e" TYPE & AS PER TABLE-1 OF IS:9628 FOR "n" TYPE

FRAME	E
112/132	100
160	85

ITEM/TAG No.			
RATING			
CABLE SIZE			
O/A NO.:	CUSTOMER :		
PROJECT :	CONSULTANT :		JOB No. :

SL. NO	FRAME	A	AA	AB	ϕAC	AD	B	BA	BB	C	CA	D	E	F	GA	GD	H	*HA	HD	HE	HF	ϕK	L	LC
1	ePM/nPM 112M	190	40	230	218	227	140	40	180	70	115	28	60	8	31	7	112	10	270	-	12	12	385	445
2	ePM/nPM 132S	216	40	256	260	245	140	40	180	89	137	38	80	10	41	8	132	12	308	8	-	12	442	526
3	ePM/nPM 132M						178		218														480	564
4	ePM/nPM 160M	254	60	314	310	255	210	60	270	108	167	42	110	12	45	8	160	14	380	35	-	15	596	705
5	ePM/nPM 160L						254		314														640	749

Z122108100JR

SURFACE ROUGHNESS (MAX) AS PER KSD-02-027
 Ra μm 50 12.5 25 1.6 3.2 6.3 1.6 0.4 0.8 0.025 0.05 0.1
 OLD NEW UNMENTIONED
 CHAM: R0.5
 UC: R0.5

REV.	ZONE	DCN.No.	BRIEF RECORD	SIGNATURE	DATE	PRINTS ISSUED TO
1	--	0122209	REDRAWN IN A NEW FORMAT.	Sd/-	22.01.09	QA PRODUCTION MMD

THIS SUPERSEDES FROM dt AS PER DCN No.....
 THIS SUPERSEDED BY FROM dt AS PER DCN No.....

MATERIAL SPECIFICATION	RAW MATERIAL SIZE	WEIGHT kg
		RM FIN.

CASTING/FAB REF. --- No.P.S.: ---
 USED ON RE DRAWN CHECKED STANDARD APPROVED
ePM/nPM 112 & 160 Sd/- Sd/- Sd/- Sd/-
 d22/01/2009 d22/01/2009 d22/01/2009 d22/01/2009

TITLE: **DIMENSION SHEET** **32210898R1**
 SHEET ONE OF ONE

KIRLOSKAR ELECTRIC COMPANY LTD. HUBLI-580030 (INDIA)

FORM No. 02 201 02B (ISSUE 7)