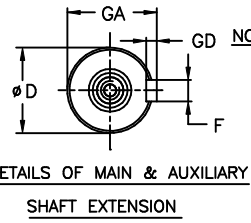
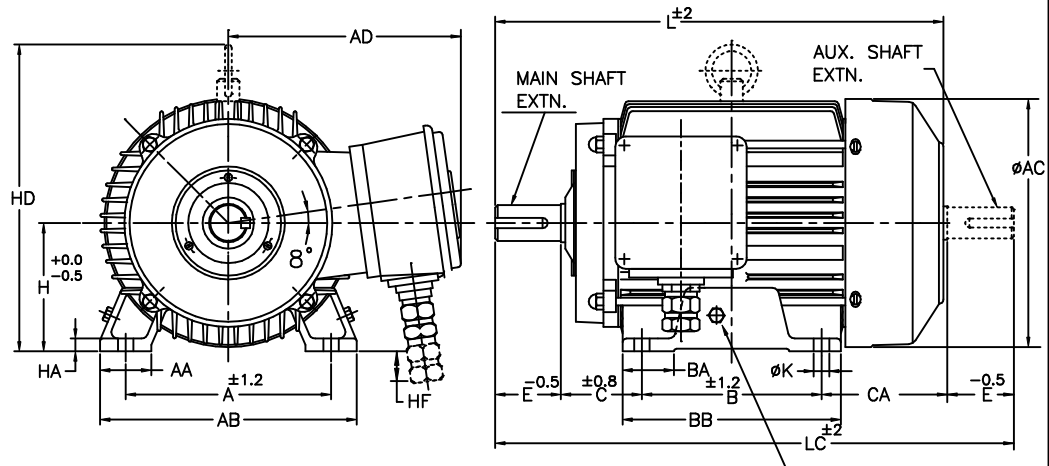


UNMENTIONED TOLERANCES  
 LINEAR ABOVE 0 6 315 1000  
 DIMENSIONS (SUPTO 6 315 1000 2000  
 (MACHINED) TOL. ±0.2 ±0.5 ±0.8 ±1.2  
 ANGLES ± 1/2°

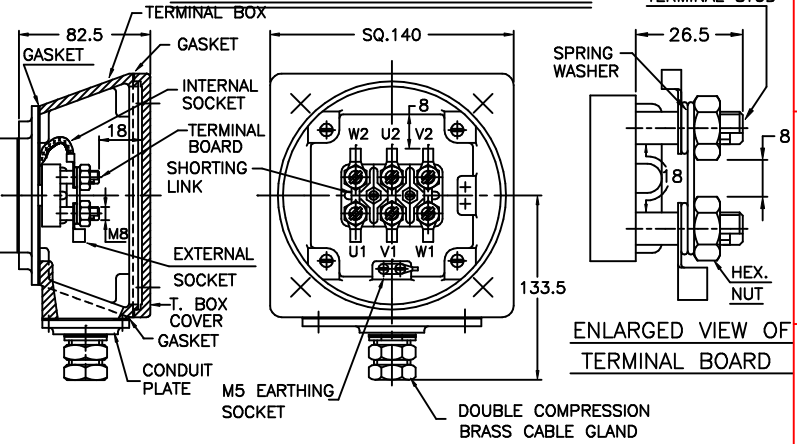
ALL INFORMATION CONTAINED IN THIS DOCUMENT IS CONFIDENTIAL AND THE PROPERTY OF KIRLOSKAR ELECTRIC CO.LTD. REPRODUCING OF THESE IN ANY FORM IS TO BE DONE WITH THE SPECIFIC PERMISSION OF THE COMPANY.

**DIMENSIONAL DRAWING**



- NOTE : 1. DIMENSIONS ARE AS PER IS:1231  
 2. DEGREE OF PROTECTION: IP:55 AS PER IEC:60079-0 & IS:4691.  
 3. TOLERANCE ON 'D' : j6.  
 4. PROTECTED CENTRE HOLE AT SHAFT EXTENSION AS PER IS:2540.  
 "M6 X 16" FOR 'D'- φ19  
 "M8 X 20" FOR 'D'- φ24  
 "M10 X 24" FOR 'D'- φ28  
 5. TERMINAL BOX CAN BE ROTATABLE THROUGH 360° IN STEPS OF 90°.  
 \* 6. BELOW MENTIONED 'HA' DIMENSIONS ARE MINIMUM.  
 7. KEY & KEYWAY ARE AS PER IS:2048 & TOLERANCE ON KEYWAY IS P9.  
 8) FRAME 80 & 90 ARE WITHOUT LIFTING HOOKS.

**TERMINAL BOX ARRANGEMENT**



MINIMUM ELECTRICAL CLEARANCE & CREEPAGE DISTANCES ARE AS ARE AS PER TABLE-1 OF IS:6381 FOR "e" TYPE & AS PER TABLE-1 OF IS:9628 FOR "n" TYPE

SL. NO.	FRAME	A	AA	AB	φAC	AD	B	BA	BB	C	CA	D	E	F	GA	GD	H	HA	HF	φK	L	LC	HD
1	ePM/nPM 80	125	30	155	156	175	100	30	120	50	80	19	40	6	21.5	6	80	10	25	10	270	310	-
2	ePM/nPM 90S	140	35	175	178	185	100	30	120	56	87	24	50	8	27	7	90	10	15	10	293	343	-
3	ePM/nPM 90L	140	35	175	178	185	125	30	145	56	87	24	50	8	27	7	90	10	15	10	318	368	-
3	ePM/nPM 100L	160	40	200	193	196	140	40	170	63	99	28	60	8	31	7	100	10	5	12	360	422	243

**Z122106200JR**

SURFACE ROUGHNESS (MAX) AS PER KSD-02-027  
 Ra μm 50 12.5 25 1.6 3.2 6.3 1 0.2 0.4 0.8 1.6 0.025 0.05 0.1  
 OLD NEW  
 UNMENTIONED  
 CHAM: R0.5  
 UC:

REV.	ZONE	DCN.No.	BRIEF RECORD	SIGNATURE	DATE	PRINTS ISSUED TO
2	-	0122209	REDRAWN IN A NEW FORMAT.	sd/-	22.01.09	PRODUCTION
1	A-4	2522200	Kφ12 WAS 10 FOR ePM/nPM100I	vsi	13.10.00	MMD
8						

THIS SUPERSEDES ..... FROM dt ..... AS PER DCN No.....  
 THIS SUPERSEDED BY ..... FROM dt ..... AS PER DCN No.....

MATERIAL SPECIFICATION	RAW MATERIAL SIZE	WEIGHT kg
-	-	RM FIN.
-	-	-

CASTING/FAB REF. \_\_\_\_\_ No.P.S.: -  
 USED ON ePM/nPM 80 & 100  
 REDRAWN CHECKED STANDARD APPROVED  
 sd/- sd/- sd/- sd/-  
 dt22/01/09 dt22/01/09 dt22/01/09 dt22/01/09

TITLE: **DIMENSION SHEET** **32210698R2**  
 SHEET ONE OF ONE

**KIRLOSKAR ELECTRIC COMPANY LTD. HUBLI-580030 (INDIA)**

FORM No. 02 201 02B (ISSUE 7)